

VERSION 2.0

JUNE 20, 2017



REPORT WRITER METHOD SELECTION SEARCH

APP NUMBER: 010031

Powered by:

MYOB Greentree

Table of Contents

Features	2
Important Notes	2
Other Requirements	2
User Instructions.....	3
Report Writer.....	3
Implementation Guide.....	5
App Installation.....	5
Greentree Configuration	6
App Configuration	6

FEATURES

1. **Allows for easier finding of report methods by providing a search and sorting capability in the Report Writer.**

- Note that this is only available in the old Report Writer.

IMPORTANT NOTES

- We recommend that you test the configuration of the App thoroughly in a test system prior to deploying the App in your live Greentree system.

OTHER REQUIREMENTS

Greentree Modules:

Associated Apps:

USER INSTRUCTIONS

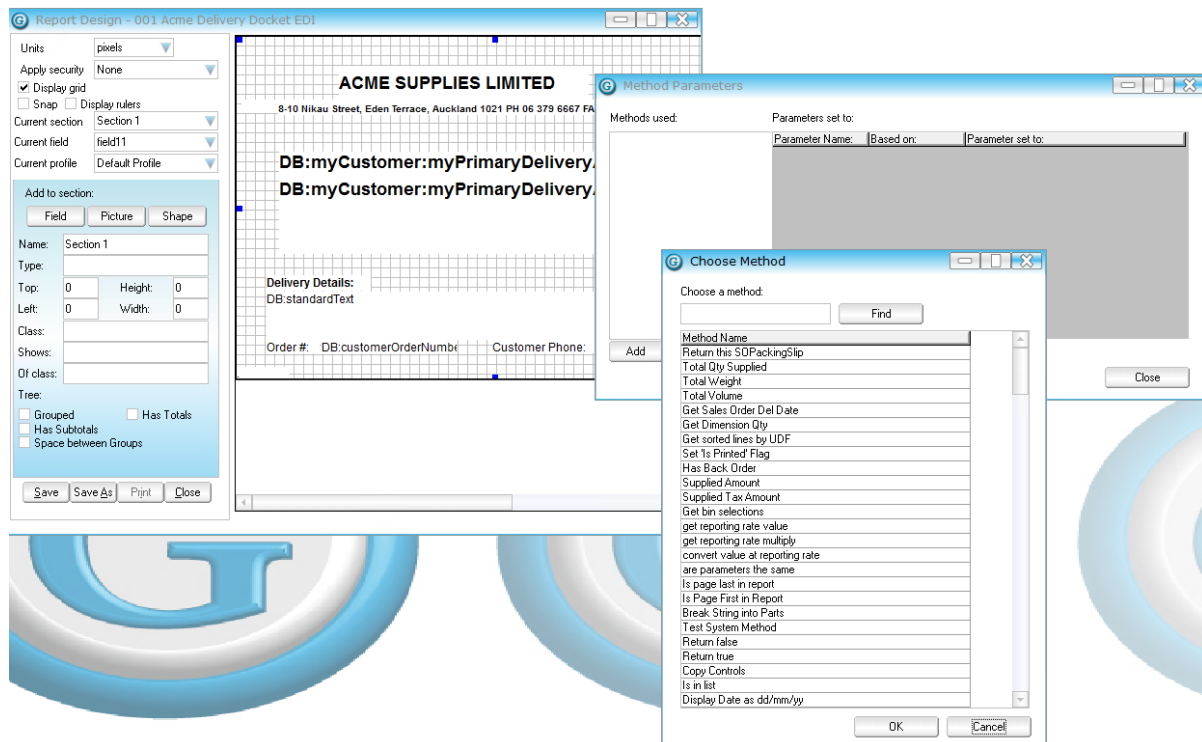
REPORT WRITER

When editing a report definition, the addition of a report method normally requires selection of the method from a small window, and the available methods are listed in what seems like a random order.

The sort is in fact related to schema but that is not at all helpful when creating a report.

This App provides a form which provides a list of methods that can be sorted, and also has a Find, as shown below.

To find a specific method, enter one or several letters of the name and click Find. This will filter the list of methods to just those that *contain* the text. It is not case sensitive.



For example; "tax" entered (without quotes) returns two methods.

Choose Method

Choose a method:

tax Find

Method Name
Supplied Tax Amount
Vapps Get Tax Report Processor

OK Cancel

IMPLEMENTATION GUIDE

Please refer to the Important Notes section above before installing and configuring this App

APP INSTALLATION

1. Log into Greentree as the **Super** user
2. Select the menu item | **System** | **Apps For Greentree** | **Apps Module Control** | 3.
Enter the New Registration Codes supplied and click Install App



4. Select/Highlight the **Report Writer Method Selection Sort** App.
5. Click on the **Edit Users** button and select the users who will be configured to use Active Directory Integration, for which companies.



6. Once you have selected the users, **Save** the settings using the save icon in the header and **Close** the window.

GREENTREE CONFIGURATION

Not required for this App.

APP CONFIGURATION

Not required for this App.